

BORÉALDESIGN
BOREALDESIGN.COM



2013 **CATALOGUE**



Our Knowledge Your Memories

BORÉALDESIGN has been building sea and touring kayaks for nearly 20 years. Our kayaks have since acquired a world renown reputation for workmanship and design.

Our superior level of quality is reached thanks to an experienced and talented team devoted to building you the very best kayak. A kayak that you will be confident paddling in a variety of conditions and a kayak you will be proud to own.

In the following pages, you will discover our vast array of products that we are excited to offer you. May they help you get out and discover your own corner of the world and be part of the memories that you create.

Enjoy exploring our wonderful blue planet.

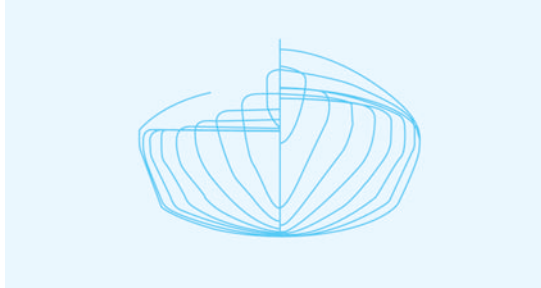
BORÉALDESIGN's team



BORÉALDESIGN Kayak innovations

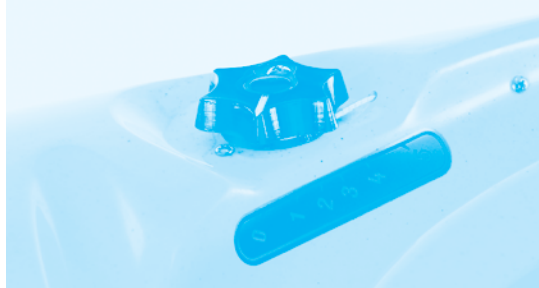
Reverse hard chine

The reverse hard chine is an exclusive feature on many of our kayaks. Such chines optimise the surface contact with the water, imparting exceptional secondary stability and enhancing manoeuvrability while on a lean. The reverse hard chine is responsible in part for the success and popularity of our Baffin and Ellesmere models.



Unique skeg system

Remarkably simple to use, our skeg system is controlled with a dial graded from 0 to 5 which corresponds to angles of 0 to 50 degrees. The skeg box is designed to optimize the storage space in the rear compartment.



Faultless finish Undeniable quality

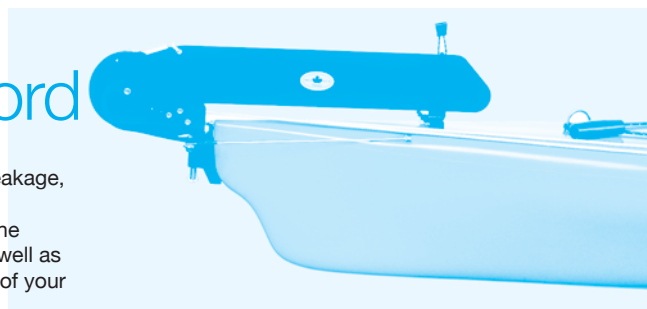
The brilliant and impeccable finish of **BORÉALDESIGN** kayaks is attributed to two important elements: The high quality of materials used in our construction and the great care and attention to detail our passionate team brings forth. All of our kayaks, as well as our moulds, are carefully fabricated, inspected and painstakingly maintained. That is why you can appreciate and trust a **BORÉALDESIGN** kayak.

100 % Rubber hatch lid

BORÉALDESIGN is proud to offer you 100 % rubber hatch lids. This material allows the lids to stay flexible even in cold temperature and offers greater watertightness.

Rudder system with Spectra® cord

The Spectra® cord, which is very resistant to breakage, has many advantages over stainless cables: it's light, quiet, and diminishes friction. The use of the Spectra® rope decreases corrosion hazards, as well as time and fees associated with the maintenance of your kayak.



BORÉALDESIGN Warranty Kayaks

Kayaks are guaranteed for two years from the date of purchase. The warranty covers parts and labour to correct material or manufacturing defects. The warranty is transferable and does not cover damages caused by improper use, negligence or damages sustained during transport.

Respectful of the environment

BORÉALDESIGN is an eco-responsible company. When producing our kayaks we apply many measure meant to preserve the environment. We are constantly looking for new ways to improve and make our production greener.

TOURING KAYAKS / POLYETHYLENE



KASKO



OOKPIK



SEDNA

KASKO	13' (3.96 m)	23 ½" (59.6 cm)	16" × 30" (41 × 76 cm)	50 lb (22.7 kg)	52 lb (23.5 kg)	90 to 250 lb (41 to 114 kg)	275 lb (125 kg)	100 gal us (375 l)	Reverse hard chine	rudder
OOKPIK	13' (3.96 m)	24" (61 cm)	18" × 32" (46 × 81 cm)	52 lb (23.5 kg)	54 lb (24.5 kg)	120 to 285 lb (55 to 130 kg)	285 lb (130 kg)	106 gal us (400 l)	Reverse hard chine	rudder
SEDNA	15' (4.57 m)	23 ¼" (59 cm)	17" × 32" (43 × 81 cm)	—	60 lb (27.2 kg)	120 to 225 lb (55 to 102 kg)	260 lb (118 kg)	103 gal us (390 l)	Soft	RUDDER

Length	Width	Cockpit	Kayak Weight (without rudder)	Kayak Weight (with rudder)	Recommended weight of paddler	Recommended load limit	Total Volume	Type of chine	Options	
--------	-------	---------	----------------------------------	-------------------------------	----------------------------------	---------------------------	--------------	---------------	---------	--

SEA KAYAKS / POLYETHYLENE



MUKTUK



INUKSHUK



ESPERANTO

MUKTUK	16' (4.9 m)	23 ¼" (59.05 cm)	16 ½" × 31" (42 × 79 cm)	59 lb (27 kg)	90 to 190 lb (41 to 86 kg)	225 lb (102 kg)	103 gal us (390 l)	Soft		RUDDER
INUKSHUK	17' (5.18 m)	23 ½" (59.6 cm)	16 ½" × 31" (42 × 79 cm)	62 lb (28 kg)	120 to 225 lb (55 to 102 kg)	275 lb (125 kg)	106 gal us (400 l)	Soft		RUDDER
ESPERANTO	19'6" (5.9 m)	28 ½" (72.4 cm)	17" × 32" (43 × 81 cm)	97 lb (44 kg)	90 to 240 lb (41 to 109 kg)	480 lb (218 kg)	195 gal us (738 l)	Soft	Child seat	RUDDER

Length	Width	Cockpit	Kayak Weight	Recommended weight of paddler	Recommended load limit	Total Volume	Type of chine	Options
--------	-------	---------	--------------	-------------------------------	------------------------	--------------	---------------	---------



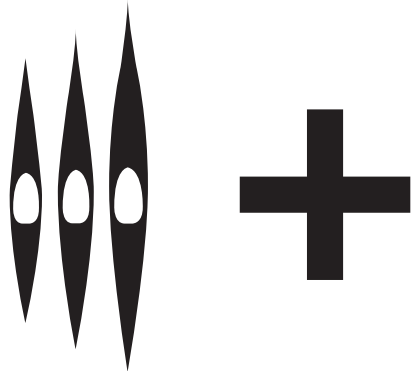


TRY IT OUT

BAFFIN SERIES

Three sizes to fit all paddlers and adventures / Semi-arched hull combined with a reverse hard chine gives a bite to this Greenland style series / Kayak series designed for athletic paddlers wanting a high-performance kayak and brisk paddling experience / Unsurpassed manoeuvrability / Skeg, Backband seat and day hatch are standard equipment.

THREE SIZES



P1 / C1 / T1	16'6" (5.06 m)	21 1/2" (54.6 cm)	16" x 31" (41 x 79 cm)	59 lb** (26.8 kg)	53 / 48 / 44 lb (24 / 21.8 / 20 kg)	90 to 160 lb (41 to 73 kg)	240 lb (109 kg)	91 gal us (345 l)	Reverse hard chine	SKEG
P2 / C2 / T2	17' (5.18 m)	22 1/4" (56.5 cm)	16" x 31" (41 x 79 cm)	60 lb** (27.2 kg)	54 / 49 / 45 lb (24.5 / 22.3 / 20.5 kg)	140 to 225 lb (64 to 102 kg)	275 lb (125 kg)	99 gal us (375 l)	Reverse hard chine	SKEG
P3 / C3 / T3	17'6" (5.36 m)	23" (58.4 cm)	17" x 33" (43 x 84 cm)	62 lb** (28.2 kg)	56 / 51 / 47 lb (25.5 / 23.2 / 21.4 kg)	200 to 280 lb (91 to 127 kg)	320 lb (145 kg)	110 gal us (415 l)	Reverse hard chine	SKEG

Length	Width	Cockpit	Kayak Weight (Polyethylene)	Kayak Weight (Composite) FG / KV / CA*	Recommended weight of paddler	Recommended load limit	Total Volume	Type of chine
--------	-------	---------	--------------------------------	---	----------------------------------	---------------------------	--------------	---------------

* FG = Fiberglass / KV = Kevlar® / CA = Carbon fiber clear coat ** Thermoformed are approximatively 25% lighter.



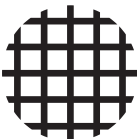
THREE CHOICES
OF MATERIAL



POLYETHYLENE



COMPOSITE



THERMOFORMED

TRY IT OUT

EPSILON SERIES

Three sizes to suit all paddlers regardless of size and shape / Exceptional and confidence inspiring primary stability / Beginners progress quickly, yet the kayak's design evolves as the paddler gains experience / Long narrow waterline for more speed / Rudder, Comfort seat and day hatch are standard equipment.

P100 / C100 / T100	16'4" (4.98 m)	22 1/2" (57.2 cm)	16" x 31" (41 x 79 cm)	62 lb** (28 kg)	53 / 48 / 44 lb (24 / 21.8 / 20 kg)	90 to 160 lb (41 to 73 kg)	240 lb (109 kg)	99 gal us (375 l)	Soft	RUDDER
P200 / C200 / T200	17' (5.18 m)	23 1/2" (59.7 cm)	16" x 31" (41 x 79 cm)	64 lb** (29 kg)	55 / 50 / 46 lb (25 / 22.7 / 20.9 kg)	140 to 225 lb (64 to 102 kg)	295 lb (134 kg)	110 gal us (415 l)	Soft	RUDDER
P300 / C300 / T300	17'6" (5.34 m)	24 1/4" (61.6 cm)	17" x 33" (43 x 84 cm)	66 lb** (30 kg)	57 / 52 / 48 lb (25.8 / 23.5 / 21.8 kg)	200 to 280 lb (91 to 127 kg)	340 lb (155 kg)	119 gal us (450 l)	Soft	RUDDER

Length	Width	Cockpit	Kayak Weight (Polyethylene)	Kayak Weight (Composite) FG / KV / CA*	Recommended weight of paddler	Recommended load limit	Total Volume	Type of chine
--------	-------	---------	--------------------------------	---	----------------------------------	---------------------------	--------------	---------------

* FG = Fiberglass / KV = Kevlar® / CA = Carbon fiber clear coat ** Thermoformed are approximatively 25% lighter.





PAKESSO



NARVAL



ALVIK

PAKESSO	14'6" (4.42 m)	22 ½" (57.2 cm)	16" × 30" (41 × 76 cm)	46 / 45 / 39 lb (20.9 / 19.5 / 17.8 kg)	90 to 225 lb (41 to 102 kg)	260 lb (118 kg)	103 gal us (390 l)	Reverse hard chine	SKEG / RUDDER
NARVAL	16' (4.88 m)	24 ¼" (61.6 cm)	17" × 32" (43 × 81 cm)	51 / 46 / 42 lb (23 / 20.9 / 19.1 kg)	90 to 225 lb (41 to 102 kg)	250 lb (114 kg)	106 gal us (400 l)	Soft	RUDDER
ALVIK	17' (5.18 m)	23" (58.4 cm)	16" × 30" (41 × 76 cm)	51 / 46 / 42 lb (23 / 20.9 / 19.1 kg)	120 to 225 lb (55 to 102 kg)	260 lb (118 kg)	106 gal us (400 l)	Soft	RUDDER

Length	Width	Cockpit	Kayak Weight FG / KV / CA*	Recommended weight of paddler	Recommended load limit	Total Volume	Type of chine
--------	-------	---------	-------------------------------	----------------------------------	---------------------------	--------------	---------------

* FG = Fiberglass / KV = Kevlar® / CA = Carbon fiber clear coat

SEA KAYAKS / COMPOSITE



ELLESMERE



LABRADOR



BÉLUGA

ELLESMERE	17'	22"	16" x 30"	52 / 47 / 43 lb	—	120 to 225 lb	275 lb	92 gal us	Reverse	Ocean cockpit	SKEG
	(5.18 m)	(55.9 cm)	(41 x 76 cm)	(23.5/21.4/19.5 kg)		(55 to 102 kg)	(125 kg)	(350 l)	hard chine	/ Day hatch	
LABRADOR	18'4"	21"	16" x 30"	54 / 49 / 45 lb	56 / 50 / 46 lb	120 to 225 lb	300 lb	109 gal us	Reverse	Day hatch	SKEG /
	(5.59 m)	(53.3 cm)	(41 x 76 cm)	(24.5/22.3/20.5 kg)	(25.5/22.7/20.9 kg)	(54 to 102 kg)	(136 kg)	(450 l)	hard chine		RUDDER
BÉLUGA	21'	28 ½"	17" x 32"	—	82 / 76 / 70 lb	90 to 240 lb	500 lb	198 gal us	Soft	Day hatch	RUDDER
	(6.4 m)	(72.4 cm)	(43 x 81 cm)		(37.3/34.5/31.8 kg)	(41 to 109 kg)	(227 kg)	(750 l)			

	Length	Width	Cockpit	Kayak Weight (skeg) FG / KV / CA*	Kayak Weight (rudder) FG / KV / CA*	Recommended weight of paddler	Recommended load limit	Total Volume	Type of chine	Options
--	--------	-------	---------	--------------------------------------	--	----------------------------------	---------------------------	--------------	------------------	---------

* FG = Fiberglass / KV = Kevlar® / CA = Carbon fiber clear coat



VITÄL



VAÅG

With their pronounced rocker, your manoeuvrability is rapid and precise. They are perfect for playing in the surf or heading out into the rougher conditions.

Robust, the Vitäl and Vaåg will allow you to have many sensational expeditions and will rise to your highest expectations.

VITÄL	16'6" (5.03 m)	21" (53.3 cm)	16" x 31.5" (41 x 80 cm)	52 / 48 / 44 lb (23.6/21.8/20 kg)	90 to 190 lb (40.8 to 86.2 kg)	265 lb (120 kg)	85.8 gal us (325 l)	Soft	Unbreakable super comfortable thermoformed Minicel® foam seat
VAÅG	17'4" (5.30 m)	21.5" (54.6 cm)	16" x 31.5" (41 x 80 cm)	54 / 49 / 45 lb (24.5/22.3/20.5 kg)	150 to 240 lb (68 to 108.8 kg)	300 lb (136 kg)	100.3 gal us (380 l)	Soft	High performance customizable Minicel® backrest Aluminum footbraces Retractable cable skeg

Length	Width	Cockpit	Kayak Weight FG / KV / CA*	Recommended weight of paddler	Recommended load limit	Total Volume	Type of chine	Standard Features
--------	-------	---------	-------------------------------	----------------------------------	---------------------------	--------------	------------------	-------------------

* FG = Fiberglass / KV = Kevlar® / CA = Carbon fiber clear coat



BAFFIN T SERIES



EPSILON T SERIES

Popham Beach, Maine, USA, photo: Russell Thompson

THERMOFORMED CONSTRUCTION

A thermoformed construction is the perfect combination of the advantages of rotomolded and composite boats. It creates a kayak that is up to 25% lighter, stiffer, faster, and let's face it, looks better than a comparable rotomolded boat while being significantly tougher and more affordable than a comparable composite boat. With a thermoformed kayak you get it all: lightweight, beautiful, tough, and durable.



Lighter

Stiffer

Faster



Basse-Côte-Nord, Québec. Photo: R. Lemerle

BORÉALDESIGN

3600 1^{ère} rue, Suite 20
St-Hubert
Québec, Canada, J3Y 8Y5

T: 450 812-3613
F: 450 766-1747

info@borealdesign.com
www.borealdesign.com

 www.facebook.com/borealdesign

REDUCE | REUSE | RECYCLE
conception: transistordesign.com